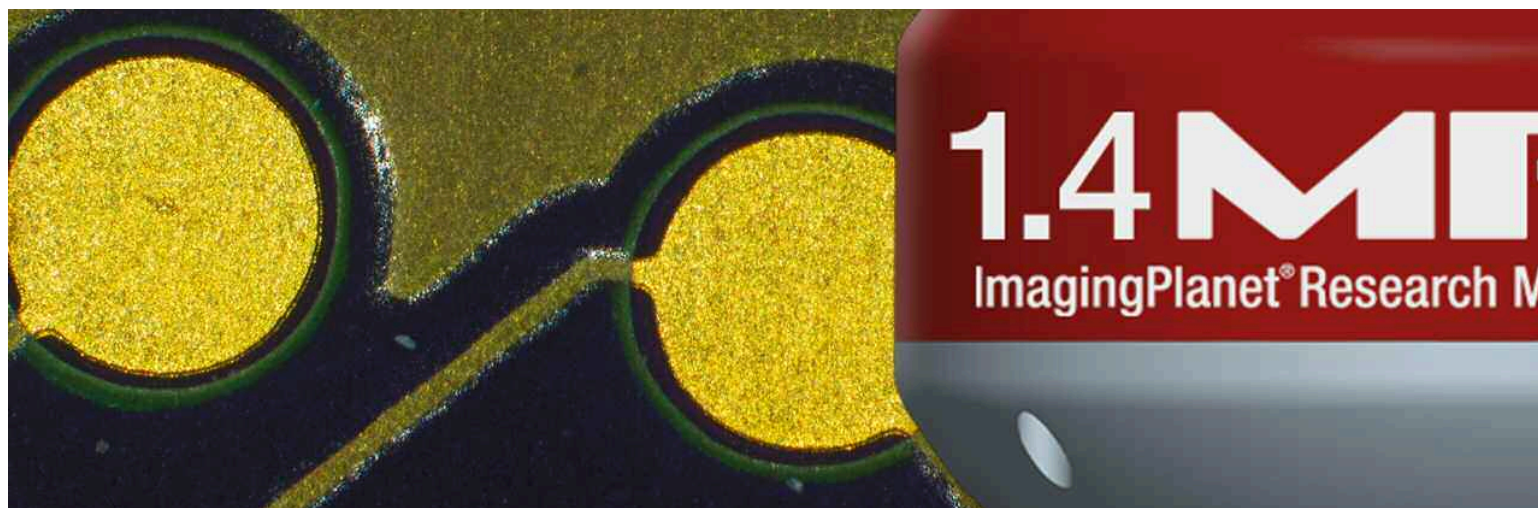


## Research Grade Microscope Camera



### A New Frontier in High-Speed Digital Imaging

#### **1.4MPX Color USB2.0 Microscope Digital Camera System**

Provides the microscope imaging professional with excellent megapixel image quality and affordability in one easy-to-use package.

**Document, Archive and Publish** with ease using this high resolution 1.4 mega-pixel digital microscope camera designed for a wide variety of clinical, life science, material science, and educational microscope applications.

#### **Features and Benefits:**

##### **1.4 Million Pixel High-Performance Sony Progressive Scan CCD**

Delivers 1392x1040 pixel resolution in full-color at 15FPS.

##### **Computer Controlled Point and Shoot Simplicity**

Microscope images are captured effortlessly in stunning full 36-bit color.

##### **User Definable Region of Interest and Binning Control**

Delivers a maximum frame rate of 200 fps.

##### **Twain Compatible Software**

Instant integration within popular imaging applications.

##### **USB 2.0 Interface**

Offers “plug and play” connectivity for a desktop or laptop computer with high speed data transfer.

##### **Complete Camera and Software Package Available**

Process, measure, and analyse your images with ease.

# Technical Specifications

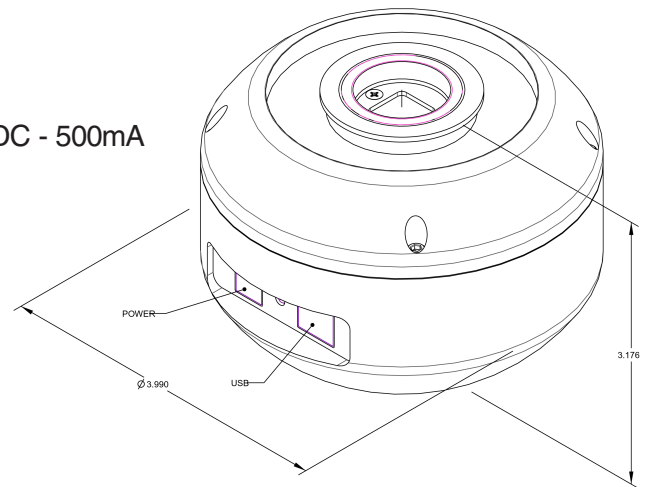
**1.4 MPX™**

## Camera

|                           |  |
|---------------------------|--|
| <b>Image Sensor:</b>      | Sony® ICX205   |
| <b>Sensor Array:</b>      | 1/2" Format 7.6mm x 6.2mm                            |
| <b>Effective Pixels:</b>  | 1392x1040, 4.65 um square pixels                     |
| <b>Frame Rate:</b>        | 15 fps at 1392 x 1040, >200 fps with binning and ROI |
| <b>Dynamic Range:</b>     | >66dB  |
| <b>Digital Output:</b>    | 8 and 12-bit   |
| <b>Read Noise:</b>        | 12 e-rms   |
| <b>Readout Frequency:</b> | 28.6 MHZ   |
| <b>Power Requirement:</b> | USB bus power, or external 5VDC - 500mA              |
| <b>Shutter:</b>           | Electronic   |
| <b>Lens Mount:</b>        | C-Mount  |

## Operator Controls

|                             |                                       |
|-----------------------------|---------------------------------------|
| <b>Integration Time:</b>    | 1/1000 to 16 sec.                     |
| <b>ROI:</b>                 | User Selectable                       |
| <b>Auto Exposure:</b>       | Automatic / Manual                    |
| <b>White Balance:</b>       | Automatic / Manual                    |
| <b>Gain:</b>                | Programmable / 1 to 10x optimizable   |
| <b>Interface Connector:</b> | Standard USB 2.0 high-speed interface |
| <b>Binning Options:</b>     | 2x2, 3x3, 4x4                         |



1.4MPX Dimensions

## Recommended Computer Requirements

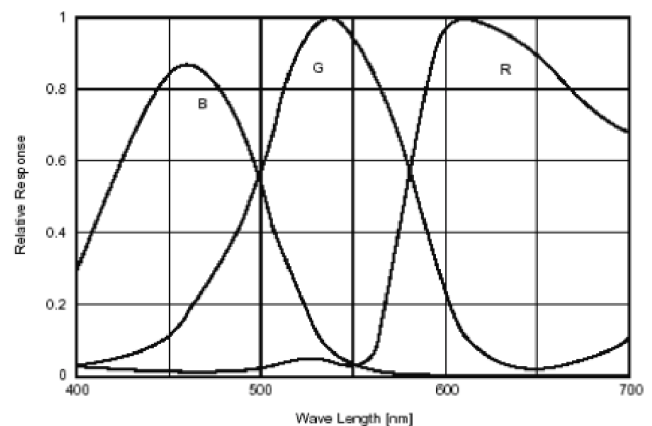
- Pentium 4, 1.3GHz or higher
- 512 Mb RAM
- 60 Mb hard drive free space or more
- USB 2.0 Port
- Windows 2000 or XP

## Rincon™ Imaging Software

Simple Image Measurement and Analysis Software  
Included at One-Low Price\*

### Exclusive features include:

- Live Measurement
- 3D-Visualization
- Z-Axis Focus Enhancement
- Time Lapse Capture with Time Stamp Features



Color Response Curve

\*When ordered as a system SKU: IPSLCAI4MPX

**IMAGINGPLANET®**  
RESEARCH MICROSCOPY GROUP™

1.4 MPX™ is distributed exclusively through ImagingPlanet and its network of authorized resellers worldwide.

IMAGINGPLANET.COM 175 Cremona Drive | Goleta, CA 93117 | 800.796.8909